



# The Inlet

Newsletter for Guardians of Pāuatahanui Inlet

AUGUST

2016

*The Inlet is a newsletter that brings together local and regional news affecting the Pāuatahanui Inlet and its environs.*

*The Inlet comes out three times a year and current or back issues can be downloaded from our website.*

*The newsletter includes items of concern that affect the area as well as general interest topics for everyone.*

*Please contact us if you would like to contribute to **The Inlet**.*

P O Box 57034

Mana

Porirua 5247

[pauainlet@gmail.com](mailto:pauainlet@gmail.com)

[www.gopi.org.nz](http://www.gopi.org.nz)

## Inside this issue:

- Our AGM 2016 2
- 2016 Photographic Competition 3
- Te Ara Piko Update 5
- FEATURE ARTICLE: Whaitua 6
- Neil & Juliet Bellingham 9
- Family Corner 10
- On The Horizon 11
- Emergency Numbers 11
- Membership Form 12

## FROM THE CHAIRPERSON

The day I wrote this was the sixth in a spell of biting cold southerlies and one way of mentally dealing with such conditions is to look forward to what is coming up in spring and summer. In the list of events in the 'On the Horizon' page there is a particularly important event, the 2016 Cockle Survey.

As we mention elsewhere in this issue, one of the first two people to be made a life member, Neil Bellingham, was instrumental in establishing the earliest of GOPI's cockle surveys back in 1992 and 1995. Since then we have organised six succeeding, three-yearly, surveys each showing an overall increase in the population of these very important shellfish.



Cockles make up a large proportion of the living organisms in the Inlet and being filter feeders they are strongly affected by the state of their aquatic habitat. Changes in their population, therefore, provide a direct indication of the biological health of the Inlet. It is vital that this regular survey continues as it provides one of the clearest measures of the progress towards restoring the Inlet to full health.

The survey requires a large number of volunteers and we will need enough people to make up 31 teams of 3 or 4 each; that is somewhere between 90 and 120 willing souls.

As we say in 'On the Horizon', the prime date is 27 November, with a backup date of 11 December. Please note these in your diaries and come along if you can. I can't guarantee ideal weather but I can promise that it will be a muddy and very interesting, satisfying activity to take part in. A full history of the surveys is on our website at <http://www.gopi.org.nz/our-activities/cockle-survey-2/>.

\*\*\*\*\*

If you are a whitebaiter, or have friends who are, you will probably already know that the 2016 season started on 15 August.

One of our aims is to promote and protect the ecological, recreational and cultural values of the Inlet. Whitebaiting is a tradition, a pastime that means a lot to the people who fish for them and something we want future generations to enjoy. We, therefore, ask that people follow the rules which can be found on the DOC website. To see them you can go directly to this link: [Whitebait](#).

We included a Feature Article on whitebait in our August 2014 issue of *The Inlet* that you may like to read again: [August 2014](#).

**Tony Shaw**

## OUR 2016 AGM

This year's AGM was a well-attended event and we thank all those who came along to take part in the formal voting process and also enjoy the following talk and general socialising.



The highlight of the evening was the presentation of Life Membership to Neil and Juliet Bellingham, longstanding members of the Guardians. Neil and Juliet have served our local environmental cause, contributing to many activities and providing educational resources for Pāuatahanui and the surrounding districts. In speaking of their work, Tony Shaw particularly highlighted their early involvement in establishing the cockle survey, and the production of 'Pāuatahanui Inlet - a Living Resource', much valued by teachers. Tony noted that these GOPI Life Memberships were the first ever presented.

A brief life history of Neil and Juliet Bellingham has been included later in this issue of *The Inlet*.

The formal part of the meeting was longer than usual with some rule changes to approve and a historically large committee to vote in. In speaking to his Annual Report, Tony drew attention to two special successes for the past year: the positive outcomes of seagrass transplant trials and the very satisfactory solution that was found to the potential loss of expertise when the Pāuatahanui Inlet Community Trust (PICT) was wound up.



Firstly, seagrass samples taken from Pāuatahanui Inlet were transplanted to other areas of the Inlet that had lost colonies of this important species. While some plots were affected by weather conditions and did not flourish, others have become established and are doing well. This is significant for the Inlet and we hope it will result in developing a plan to extend the total area of seagrass meadows that currently have been on the decline.

**Seagrass Team**

Secondly, the outcome of the winding-up of PICT has been particularly pleasing. Four of PICT's trustees joined GOPI management mostly as a sub-committee, with their additional knowledge and expertise greatly strengthening GOPI's influence in the community.

The rule changes to vote on were:

- ⇒ Expanding our aims and objectives by incorporating specific aspects of PICT's primary goals into those of the Guardians.
- ⇒ Allowing for an increase in size of the committee so that we can incorporate the former trustees of PICT.

### *Our AGM cont.....*

- ⇒ Increasing the minimum time required for postal notifications and formalising the notice given by email.

All three changes were passed unanimously.

The full 2016 committee was then re-elected and expanded by the additional four members from PICT. However, we now need to present the updated rules to the Registrar of Incorporated Societies for official registration before the new committee can be formally ratified.

The final issue raised at the AGM was jet-ski use in the Inlet, how we should approach this apparently growing problem and what steps we can take to ensure the issue doesn't get out of hand. This will be a subject for our committee to focus on during the coming year.

The informal part of the meeting was a talk by Reuben Mills, Environmental Manager CPB/HEB (the joint venture construction companies), on the environmental protection measures being incorporated into the construction of Transmission Gully Motorway. This was an enlightening presentation on the outstanding work that has been carried out on this significant project, the techniques incorporated to mitigate sedimentation, the monitoring methods used and the ecological measures employed to protect some of the aquatic and forest wildlife (fish, birds and lizards) of the area.

Our thanks go to Reuben for his contribution to our understanding of this subject.

The meeting ended with supper and a chance to talk about points of interest among all of us who attended.

---

## 2016 PHOTOGRAPHIC COMPETITION



**A**nother very successful photographic competition reached its conclusion on 21 May and what a way it was to celebrate the Inlet. This year's competition produced another crop of wonderful images

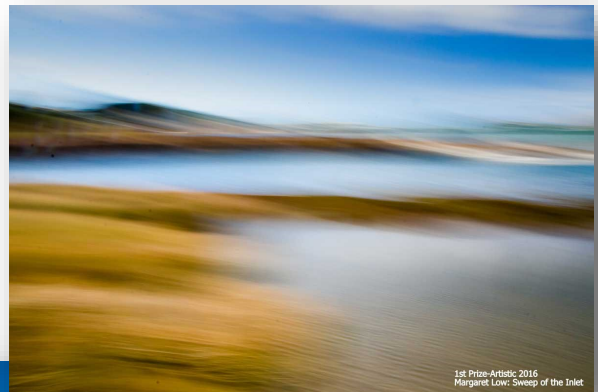


### *Photographic competition cont.....*

showing every aspect of life around our harbour, from the beauty of the natural world, to atmospheric views of landscapes, to the disturbing elements of human impact emphasised in very artistic ways.

While the number of entries was down on last year's competition the quality of images submitted this year was again very high, giving our judge a hard task to select the winning and highly commended photos. We are especially pleased to note the ongoing success of the youth photo workshop that Destina Munro has run on our behalf for the last three years. Five of this year's workshop participants were successful in the competition: Kaitlyn Payne, Luke and Alex Manning, Phoebe Shing and Jessica Rayner.

*Phoebe Singe - 'Hallucinations' (Junior Artistic)*



*Cherie Haughton - 'Early Evening Swimming' (1st Recreation)*

*Margaret Low - 'Sweep of the Inlet' (1st Artistic)*

All the images from this year's competition can be viewed on [Google Photos](#).

Our judge, Geoff Marshall, commented on the quality of the images this year. He said: *'Photography is all about light and a number of the winning images made good use of the warm low light that occurs early in the morning and in the late afternoon.'*

He also commented: *'I hope the entrants continue to get out and enjoy the beauty of the Pāuatahanui Inlet - an area that we are all lucky to live near and have easy access to - and to make more compelling images of the Inlet.'*

Our photographic competition attracts generous sponsorship from local businesses and we thank both our sponsors and the proprietors of the venues where the winning photos are displayed. We gratefully acknowledge the continuing generosity of Harvey Norman Porirua, who offer free printing of up to eight prints for each entrant.



## TE ARA PIKO UPDATE

*This is a summary of the current status of the project as supplied by Andrew Gray, the Landscape Architect at Porirua City Council.*

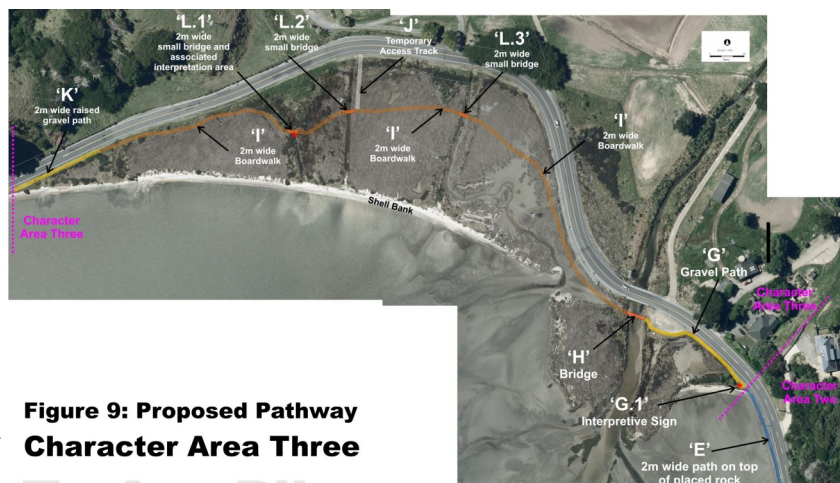
May 28, 2014 saw the opening of the first section of the Te Ara Piko walkway project. Today, with the section from Ration Point to Motukaraka Point also completed, the pathway is used daily, on average, by more than one hundred people. Here, we bring you up to date with progress since then, and plans for the next phase.

The good news is that the necessary resource consents for the final stage, from Motukaraka Point to the Camborne Walkway, were obtained in early February but these came with a total of 75 compliance conditions as well as various sub-clause conditions to boot. Bearing in mind the special environment to which these conditions apply, it is only fair that they all be met in order to ensure protection of the Inlet and its shores. Because certain legally prescribed conditions must be in place before the start of work it is taking time for construction to begin.

A key part of the process has been working with Ngati Toa, Heritage NZ and archaeologists to carry out preliminary investigations into the route and assess potential impacts on heritage sites that contain a rich history from earlier occupations. Also, the complete section needs to be divided up into smaller, achievable stages, in order to coordinate the work together with any planned road maintenance.

After much deliberation it has been decided to start construction at the half-way point: the Kakaho stream outlet, particularly as rehabilitation works there will take years to fully re-establish. As this section also contains several of the more dangerous bends on Grays Road it will give cyclists and pedestrians who already use the route between Motukaraka and Camborne a safer pathway when complete. Other considerations also make the half-way point preferable to that of the Motukaraka or Camborne ends.

To this end construction details have been formulated that include a bridge over the stream and a boardwalk extending westward from this point. The plans were put out to tender in April with evaluation of the responses starting at the end of May. The company awarded the tender will not, however, be able to start work until spring. Serious damage to the environment could occur if work was undertaken during winter months. Furthermore, a survey of current vegetation and beach profiles is necessary prior to commencement. The first signs of progress will be seen when markers are deployed to stake out the boardwalk route.



**Figure 9: Proposed Pathway  
Character Area Three**

Te Ara Piko  
Motukaraka To Camborne

Once this first phase is complete it is envisioned that Phase 2 will extend the pathway from the western end of the boardwalk to the big corner just past the memorial cross. This is still subject to financial constraints.

Integral to the project is Rotary who is helping to raise funds and is very appreciative of the community support so far received.

## FEATURE ARTICLE



*John McKoy is a past Chair of PICT and a current member of the GOPI Management Committee. He has also been appointed a member of the Te Awarua o Porirua Whaitua Committee. In this article he explains what this new group is all about.*

## WHAITUA

**A new community-based tool to improve management of water in the Porirua catchment.**

Many GOPI members may have recently become aware of some activity in the Porirua area by a group called a **whaitua committee**. You may have wondered what the group is and how it connects with other groups active in the Porirua area with interests in the Harbour and catchment such as GOPI, PICT PHACCT, the Harbour Strategy, The Joint Committee, and others.

The group is more correctly called **Te Awarua o Porirua Whaitua Committee**. This newsletter item is aimed at giving members of GOPI a clear idea of what this group is for, how it works, who is on it, and what it has been doing.

### What is a whaitua?

Whaitua means “designated area” in Te Reo Māori. The Regional Plan uses the word “whaitua” to describe a catchment managed as an integrated system. In this case, the Porirua catchment, including Te Awarua o Porirua Harbour, is the “whaitua” that will be managed as an integrated system.

### What is a whaitua committee?

A whaitua committee is a group of local iwi, officials and community members who represent the different views and values which make up the whaitua area. The committee’s job is, through a collaborative process, to develop recommendations for land and water management specific to local needs and values within their whaitua/catchment area. Each whaitua committee will also, over time, help to better integrate activities aimed at managing land and water resources within their whaitua.

The establishment of whaitua committees is a move to engage in community-collaborative decision making to better manage our natural resources. This is in line with a new national approach being taken by central government.

The *Te Awarua o Porirua Whaitua Committee* is the second one that has been set up in the Greater Wellington Region – the first was the Ruamahanga Whaitua Committee set up in the Wairarapa in early 2014.





**What is the function of the Te Awarua o Porirua Whaitua Committee?**

*Te Awarua o Porirua Whaitua Committee* was set up by Greater Wellington Regional Council in late 2014. Its job is to work in partnership with the community and GW to develop a management approach for water quality and quantity, and associated land use, in the Porirua catchment. The committee will collect and relay environmental, mana whenua, economic and technical information and community knowledge between the community and the Regional Council. The committee will then have the tricky job of making recommendations to modify provisions in the Regional Plan as necessary through plan changes.

The committee will help the community to identify methods for achieving the freshwater objectives, including setting or modifying catchment limits, which are also implemented through changes to the Regional Plan. This will include the consideration of a broad range of matters including freshwater, estuarine and coastal water quality, tangata whenua values, cultural facets, environmental and human health and the economic vitality of the region. This process recognises the interconnectedness of freshwater outcomes with outcomes for the whole of a catchment, embodying the principle of 'ki uta ki tai' – from the mountains to the sea.

**Who is on the Committee?**

The members of the *Te Awarua o Porirua Whaitua Committee* are:

Richard Cook (Community)	Stu Farrant (Community)
John Gibbs (Community)	Warrick Lyon (Community)
Dr John McKoy (Community)	Jennie Smeaton (Community)
Diane Strugnell (Community)	Larissa Toelupe (Community)
Sharli-jo Solomon (Te Runanga o Toa Rangatira)	
Naomi Solomon (GWRC)	Cr Barbara Donaldson (GWRC)
Cr Bronwyn Kropp (PCC)	Cr David Lee (WCC)

More information about the work of this group is available at:

<http://www.gw.govt.nz/te-awarua-o-porirua-whaitua-committee/>

**What has the Committee been doing?**

There are several phases for the work of the group.

The first stage has been to educate ourselves about the scope of the job and the current situation, including current systems and organisations involved in water management. This has included a number of site visits and briefings throughout the whaitua.

The next phase has been to gather information on Community Values relating to water in the whaitua. We have done this through our own community networks, through a series of public “drop in” meetings and through a survey conducted on line (<http://haveyoursay.gw.govt.nz/taop>) and through interviews at a range of events in the area. This work is largely completed and we now need to focus on sorting out the information and developing our recommendations – which will then be further discussed with the community.

The last step will be to pull everything together into a **Whaitua Implementation Programme** for presentation to GWRC.

**How does this fit with the Porirua Harbour Catchment Strategy and Action Plan?**

The Porirua Harbour Strategy and Action Plan contains the overarching vision for the harbour and catchment. The Whaitua Implementation Programme (WIP) will identify regulatory provisions that will

### *Feature Article....cont.*

achieve this vision. The Action Plan contains non-regulatory actions. The WIP may recommend additional non-regulatory actions to complement those already in the Action Plan.

#### **Te Awarua o Porirua Catchment**





## Neil & Juliet Bellingham

*Considering the special award that we have given to Neil and Juliet Bellingham it seems appropriate to give a little information about this couple to understand why we have bestowed life membership on them. (We apologise to Neil and Juliet if there are any unintentional errors in this summary).*

\*\*\*\*\*

Neil has had a remarkable career that includes significant achievements in the field of agricultural and environmental sciences. As a graduate in Agricultural Science Neil was assigned to the New Zealand Volunteer Service Abroad in 1964. In 1965, as leader of a team called Good Neighbours, Neil moved to Huaykla in North East Thailand where he oversaw the education and training of the local population and established NZ-developed agricultural techniques suitable for the area to help them become self-sufficient. During this adventure he rubbed shoulders with Sir Edmond Hillary who was president of VSA at the time. As a result of his work in Thailand Neil was awarded life membership of the NZ VSA.

On returning to New Zealand Neil joined Porirua College as a science teacher and, from that platform, became a conservation and restoration advocate in the Wellington region. In 2000 he was a founding member of 'Friends of Maara Roa' the Cannons Creek community-based restoration group responsible for revegetating the Cannons Creek Valley. With this project in mind Neil set up the 'Trees for Survival' nursery at Porirua College and as nursery manager organised working bees for the restoration plan in the valley. He received a Conservation Merit award from DOC for his work in this area.

Neil joined the Guardians of Pāuatahanui Inlet and was closely involved in the earlier Cackle surveys of the Inlet to establish a record of the population statistics of this crucial species. As a Wellington Education Support consultant he developed our education programme and along with that wrote and compiled the teaching resource kit 'Pāuatahanui Inlet – A Living Resource'. This kit provides activities, worksheets and background information for students and teachers at primary and secondary levels. It includes 5 booklets on the geology, history and ecology of the area and, although written primarily for Pāuatahanui Inlet, the material is useful for studies on estuaries throughout New Zealand. There are copies in several libraries throughout the country.

On 17 Nov 2010 Parliament declared Neil joint winner of the Inaugural 'Encore Community Leadership Award'.

\*\*\*\*\*

Juliet was awarded a BSc. Honours degree from the University of Christchurch in 1963 and shortly began working with animal ecology at the former DSIR in Wellington. After becoming a mother Juliet began her career in teaching, beginning at a local Porirua playcentre and later joining Mana College and finally Porirua College, teaching science and biology. Looking to meet new and interesting women she joined the local Zonta Club of Mana in 1986, and very soon became the President.

Inevitably, teachers with similar interests in the same school will strike up friendships, and of course Neil and Juliet did just that, and were subsequently married in 1989.

In 2000 they were together selected as NZ VSA volunteers spending two years in Zimbabwe in a teaching capacity. After several more years of specialist teaching roles back in New Zealand Juliet retired in 2006.

Along with Neil, Juliet also became involved with Friends of Maara Roa, as well as helping Neil in the work for Guardians of Pāuatahanui Inlet.

In 2012 she was awarded a Porirua City Civic Award for services to the community.



## FAMILY CORNER

### Collective Nouns

What do we mean by a 'collective noun'? Well, when we see a large group of birds flying overhead we normally say: 'Look, a flock of birds'. The word 'flock' is known as a collective noun. Such words have been applied to different species of birds, animals etc. over the centuries and while some are in common use, like 'flock', there are other, less well known collective nouns that can be used to describe a particular group.

Below you will see a table of the commonly seen birds of Pāuatahanui Inlet. In the right column is a list of collective nouns that go with these species but they are not in the right order. These are the most well known or commonly accepted nouns. There are other words that can be used and if you were to do a search you would sometimes find several alternatives for one species.

See if you can match these bird species with the collective nouns. (*Answers are on the following page, upside down*).

Put your best guess here	The Birds	List of collective nouns
	of cygnets (young swan)	Concentration
	of ducks	Host
	of fantails	Brood
	of geese	<i>Canteen</i>
	of geese (in flight)	Parcel
	of herons	Raft
	of kingfishers	<i>Bevy</i>
	of oystercatchers	Congregation
	of plovers	Spread
	of pukekos	<i>Tussock</i>
	of seagulls	Potter
	of shags	Gaggle
	of sparrows	<i>Spring</i>
	of spoonbills	Colony
	of swans	Skein
	of takahe	<i>Battery</i>
	of teal	Handout
	of tui	Sedge

## ON THE HORIZON

### Inlet Clean-up

Currently set for Sunday 9 October but this has yet to be confirmed.

### Lamb and Calf Day - Pāuatahanui School

Saturday 5 November.

### Cockle Count

This year's cockle population survey is being organised as we go to print and we can now advise the key dates for this vital triennial activity.

Sunday 27 November - This is our target date when the count will take place unless weather conditions make this unacceptable. If so:

Sunday 11 December - Our fall back date if postponement is necessary.

Assembly time: 1500hrs on 27 November

Or: 1430hrs on 11 December

## ANSWER TO FAMILY CORNER

These are the collective nouns for each of the birds listed, shown upside down.

They are in the same order as they would appear in the table, top to bottom

Brood / Raft / Spread / Gaggle / Skein / Sedge / Concentration / Parcel / Congregation /  
Potter / Colony / Handout / Host / Canteen / Bivy / Tussock / Spring / Battery

## PLEASE SIGN UP A FRIEND OR NEIGHBOUR

Sign up a neighbour, friend, or another family member. Just explain to them that membership numbers really count in giving us a strong voice to argue for what we all value about the Inlet. Membership forms can be downloaded from our website <http://www.gopi.org.nz/assets/membersForm/Membership-new.doc> or copied from the one at the back of this newsletter. Better still, if you've received this newsletter by email, just forward it to others with a note encouraging them to join.

### EMERGENCY NUMBERS FOR THE PĀUATAHANUI INLET

**Pollution:** Discharges of contaminants to air, land, storm-water drains, streams, rivers or sea and for after hours consent enquiries: Greater Wellington 0800 496 734 (24 hours)

**Boating infringements:** Greater Wellington 384 5708 (24 hours)

**Illegal fishing activity:** Ministry for Primary Industries 0800 476 224 (24 hours)

**Pāuatahanui Wildlife Reserve:** Department of Conservation 0800 362 468

Let us know what you have reported so we can keep an accurate record and follow up if necessary.

233 9391 (Chairman, GOPI) or [pauainlet@gmail.com](mailto:pauainlet@gmail.com).





## Guardians of Pāuatahanui Inlet

[www.gopi.org.nz](http://www.gopi.org.nz)  
[pauainlet@gmail.com](mailto:pauainlet@gmail.com)

### Membership Form: new members

To join the Guardians of Pāuatahanui Inlet, you can pay your subscription either online or by post. **IF YOU ARE PAYING ONLINE, PLEASE REMEMBER TO FILL IN THIS FORM WITH ALL DETAILS, AND EMAIL OR POST IT TO US.**

#### Online payment

1. Pay your sub via e-banking into our Westpac account 03-1533-0009387-00. In the 'Particulars' or 'Reference' columns, **YOU MUST** write your surname **AND** initials **AND** the period of your sub (1-yr or 5-yr).
2. Then fill in this form and either email it to us at [pauainlet@gmail.com](mailto:pauainlet@gmail.com) or post it (see next column for our postal address)

#### Postal payment

1. Write a cheque made payable to 'Guardians of Pāuatahanui Inlet'.
2. Then fill in this form and send it, along with your cheque, to: Membership Secretary, Guardians of Pāuatahanui Inlet, Box 57034, Mana, Porirua 5247.

Please fill in your details for our records. If you are filling in this form electronically, **click** at the beginning of a dotted line and then type.

Name: .....

Address: .....

E-mail: ..... Phone: .....

Please put  next to the subscription you are paying (electronic completion – **highlight** the box and type lower case x.) We are also very grateful for donations. (We are a registered charity for tax purposes: registration number CC47523.)

One-year individual (\$12.00)	<input type="checkbox"/>	Five-year individual (\$50.00)	<input type="checkbox"/>
One-year family (\$15.00)	<input type="checkbox"/>	Five-year family (\$60.00)	<input type="checkbox"/>
Donation: \$ .....		Do you require a receipt for your sub? <input type="checkbox"/>	or your donation? <input type="checkbox"/>
Date subs paid: .....		Reference appears as: .....	

*(e-banking only)*

We'd like to send you newsletters and notices via email. May we do this?

Please tell us which of our activities you would like to be part of.

Annual Clean-up day	<input type="checkbox"/>	Submissions to local bodies	<input type="checkbox"/>
Three-yearly cockle survey	<input type="checkbox"/>	Our educational programmes for schools	<input type="checkbox"/>
Website and video clips	<input type="checkbox"/>	Other:	

**NOW EMAIL OR POST THE FORM. THANK YOU AND WELCOME**